

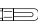
NURA lampada da parete




Lampada in tessuto
pongè plissettato tinta avorio.
La struttura è in metallo cromato.

DATI TECNICI

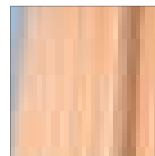
Ambiente di utilizzo: interno
Montaggio: lampada da parete
Peso netto (kg): 0,28

Codice:
PONGE' AVORIO cod. 004320

Elettrificazione:
G9 1x48W QT-13 

Certificazioni:
   IP 20 

FINITURE



Pongè avorio

